

Liaison Messenger 3.0

Key Features

- E-mail, Fax, Route, and Archive any form following any automation script you create.
- **NEW FEATURE!** All listed Invoices can be accompanied and distributed with Statements
- **NEW FEATURE!** Embed hot-links into shipment tracking numbers on e-mailed Invoices and Shipment Notifications (PDF format)
- Route forms to any e-mail address, fax number, or printer based upon variable data within the form.
- Send e-mail notifications to the Purchasing Manager when Inventory levels of a particular item run low.
- Easy to install and configure - Messenger automatically detects the current version, installed modules, company datasets, and location of the Sage PFW data files. It's simple and intuitive.
- Messenger is 100% software driven. So deployment and maintenance is simple, inexpensive and portable.
- Utilize the built-in WYSIWYG form design tool. Create new, industry specific, or unique forms for certain customers and generate them during standard forms printing.
- Print to any printer on the network, including remote printers via Citrix, WANs, or TCP/IP by form and/or by ply.
- Generate Packing Slips, Pick Tickets, International Manifests, UPS/FedEx waybills and other specialized forms.
- Messenger is 100% compatible with all laser and dot-matrix printers and is 100% compatible with the standard Sage PFW pre-printed forms.
- Eliminate folding, stuffing, sealing, buying preprinted forms, envelopes and postage by using Messenger's automated faxing and e-mailing capabilities!
- Messenger can pay for itself by eliminating preprinted forms.

The Automated Forms Server for



SAGE PFW ERP

Ply	Marginal Words	Routing	Constant
1	Sales Copy	HP LaserJet 4000 Seri (Copy 2)	
2	Acknowledgement	Send Copy Via Fax	
3	Picking Ticket	Send Copy Via E-Mail	warehouse04.east@liaisonsc.com
4	File Copy	Archive Copy To Disk	i:\accting\lsdem
5	Sales Copy	Send Copy to Salesperson	
6	Numerical	HP 2500C Series Printer	

Liaison Messenger is a Forms Automation Server that adds true workflow, routing, faxing, e-mailing and archiving of all business forms (e.g., Invoices, Purchase Orders, Statements, etc...) with no additional hardware or user intervention.

Running like an NT Service on the server or PAS, Messenger automatically processes print and post routines by request or on a scheduled basis for unattended processing. Messenger allows the end-user to store their customer's and vendor's preferred method of receiving business forms. Some customers would like their Acknowledgements e-mailed and their Invoices faxed to their central office while others want their Invoices printed but Statements e-mailed to their AP manager. Maybe overseas Vendors would like to receive Purchase Orders via e-mail grouped into a compact Adobe Acrobat PDF file - Any method requested, Messenger delivers!

Although Messenger can fax and e-mail individual forms from the desktop, including reprints, the true power comes with its automation scripts that you or your customer create. Setting up unique workflow automation rules for all forms, even for multiple company datasets, is a snap!

Messenger can also print to any printer on the network, including remote printers via Citrix, WANs, or TCP/IP: by Ply. This means File copies can print in the Mail Room, Pick Tickets can be routed to the Warehouse (with real-time inventory information), Acknowledgements faxed or e-mailed to the customer, and Salesperson copies transmitted to the respective destination using their preferred method of transmission.

All this happens automatically with no additional user intervention or prompting. Liaison Messenger is workflow automation at its best!

Configure Customer and Vendor preferences by form and automatically transmit forms via email, fax and/or print.

Liaison Messenger 3.0™

Features & Benefits

Messenger offers the ability to...

- Route plys (pages) based upon criteria you establish, i.e., all Picking Tickets for location USWEST e-mailed to a particular e-mail address.
- Print multi-part (ply) laser forms.
- Reprint any forms - whether posted or unposted.
- Print marginal words on a multi-part form, i.e.. Customer Copy, Accounting Copy, etc.
- Easily add additional Sage PFW ERP information onto any form from any AR, OE and PO data files.
- Pre-sort and decollate forms output automatically. This means all your customer copies print together, accounting copies print together, file copies print together, etc.
- Create multiple invoice formats and assign a particular format to a particular customer.
- Use one "letterhead" for all forms generated.
- Use a multi-color logo and/or "phantom" for all of your forms instead of ordering individual orders of each form.

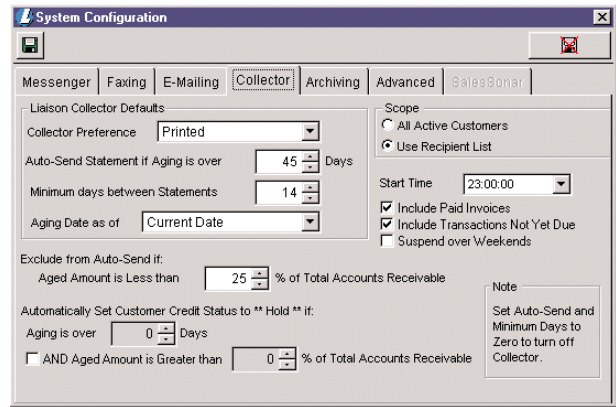
Automatically e-mail or fax...

- **Statements** triggered upon customer's aging status or on demand.
- **Order Acknowledgements** as Sales Orders are entered in Sage PFW, cutting down on order entry errors and improving customer satisfaction.
- **Shipment Notifications** when Invoices are printed. They are transmitted directly to customers indicating their order is on the way.
- **Salesperson, Territory and Location copies** of a form transmitted based on their unique preferences.
- Any form to multiple recipients (customers, vendors, salespeople, VARs) via fax, e-mail, and multiple printers and at the same time!

Messenger integrates with other Liaison Products!

Liaison Unispan™ 3.0

The most all-encompassing Customer Information Explorer container in a single tabbed window. With one click retrieve AR Current, History, Aging, Open & Closed Sales Orders & Transactions for a desired customer and access complete Inventory information like On Hand by location, Committed, Product Sales History & more!



Messenger is also an automated manager of your aged receivables. Automatically generate statements on a given date, monthly interval or triggered based upon a customers aging (i.e. if over 45 days...)

Generate...

- **"Private label" Packing Slips** with the end user's customer's logo and address printed on the form.
- **Archived copies** of all forms in a PDF file to any destination, i.e., hard disc, optical drive, CD drive, etc.
- **Bills of Lading** - Customizable per freight classifications.
- **Industry specific forms** - i.e., Medicare - streamlining data entry and handwriting of "custom forms".
- **Packing Slips, Pick Tickets, International Manifests, UPS/FedEx waybills** and custom forms you create.

Eliminate...

- Manual print and post procedures if unattended processing is turned on.
- Folding, stuffing, sealing and buying preprinted forms, envelopes and postage! Messenger can cut these costs by \$ 0.50-0.80 per form.
- Retrieving and printing File, Numerical, Alpha, and Accounting copies of forms. Archive copies of each form as a PDF and store them on the network or to a local drive.
- Manually faxing Purchase Orders or copies of Invoices.

System Requirements:

- Sage PFW ERP to current ver.
- Platinum for Windows (PFW) ver 4.6 to current version
- BatchMasterPFW for DOS/Windows ver 4.6 to current version
- Windows NT, 2000 or XP **Workstation** (Required only if running Winfax)
- Faxing requires (one) of the following:
 - Windows 2000 or Windows XP built in faxing
 - 1 license of Right Fax
 - 1 license of WinFax Pro 10.0
 - 1 license of Zetafax