

If you can print it, you can EDD it...

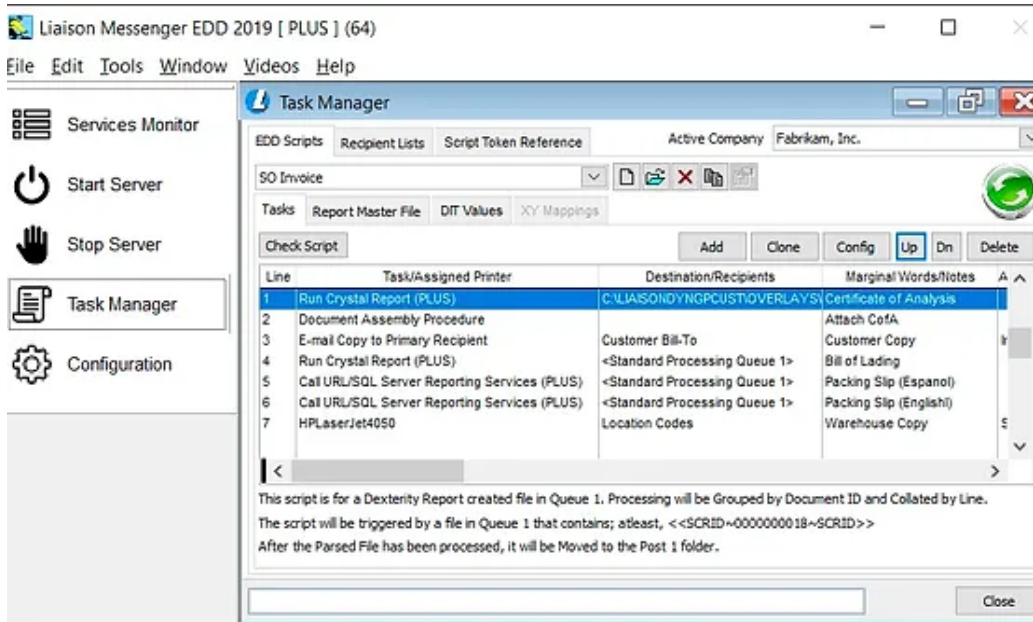


Metadata, often described as "data about data", forms the foundation for understanding and efficiently managing document content. In the world of Liaison Messenger EDD, we leverage this concept through **Data Identifier Tokens (DITs)**, our metadata tags, seamlessly integrated into your print output. These tags **enable us to identify, extract, and enhance critical information** from your printed documents.

This metadata-driven approach positions Liaison Messenger EDD as an adept partner in managing a diverse range of document types, including invoices, purchase orders, statements, **Management Reporter documents**, spreadsheets, and general reports. The true power of this approach comes to light when you utilize this metadata to chart the path for your documents, dynamically adjusting the method, attachments, and even the format of the printed materials.

In the following example, Liaison Messenger EDD demonstrates its capability to automate the Microsoft Dynamics GP SOP Invoice routine through an **EDD Script**. The process begins with a user printing a batch of invoices to our virtual printer. Liaison Messenger adeptly identifies the essential data items within each document, such as

customer key, bill-to and ship-to addresses, invoice number, ship method, and item keys. **These values are seamlessly passed, as arguments, to linked applications.**



For instance, when certain item keys require a Certificate of Analysis, Liaison Messenger efficiently triggers a Crystal Report with predefined arguments. The Certificate of

Analysis is created, attached to the respective invoice(s), and promptly emailed to the customer. If the "Ship Method" for the invoices necessitates a Bill of Lading, one is generated and printed.

Additionally, multi-lingual packing slip templates, created using SSRS Reports, **are invoked based on criteria derived from the respective country codes**. These codes are filtered utilizing Liaison Messenger EDD's powerful filtering capabilities to determine whether Line 5 or Line 6 should execute, or whether either should be generated.



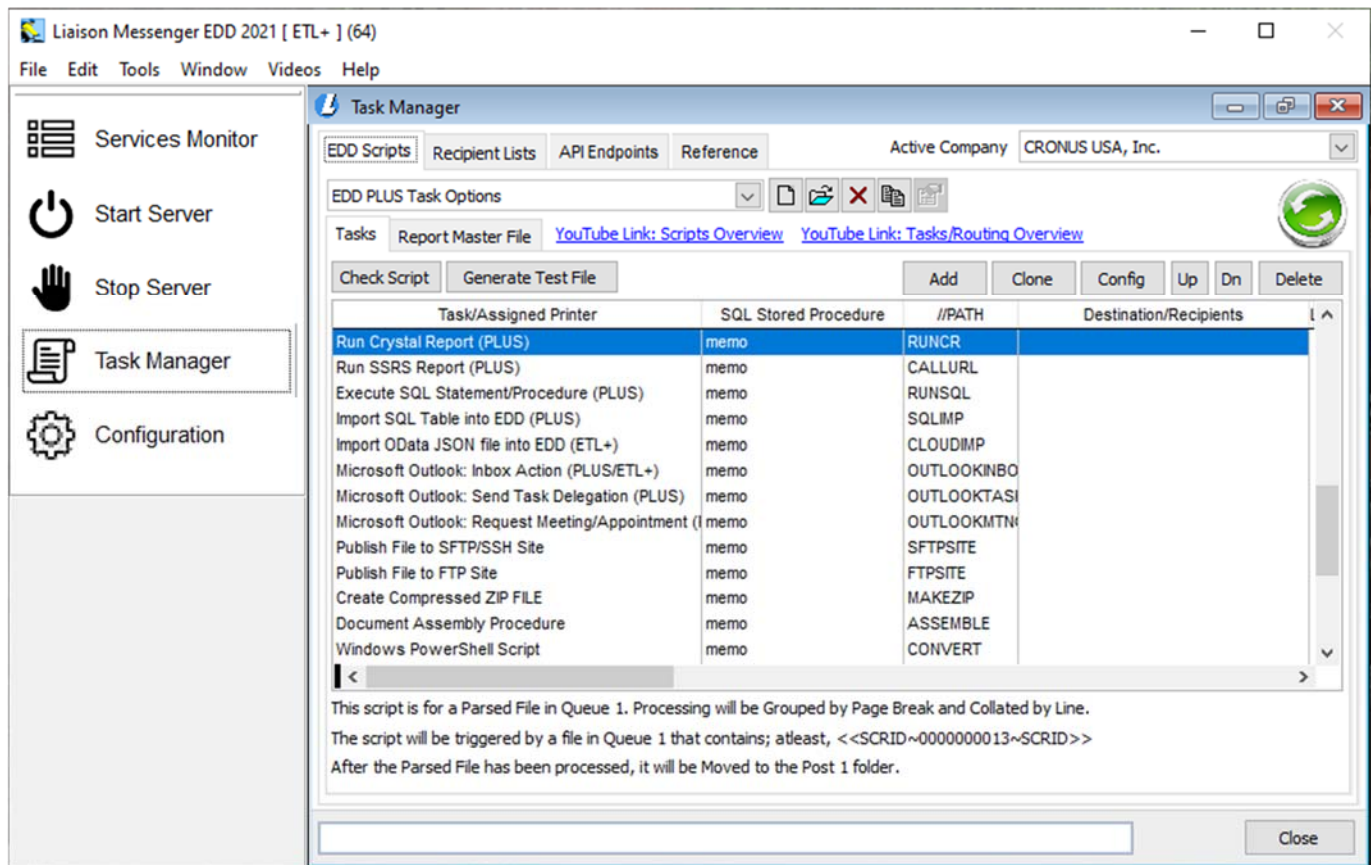
PLUS Option Pack Video
(scan-or-click)

When Liaison Messenger EDD identifies that the combination of "Ship Method" and "Ship-To" for a specific invoice aligns with predefined criteria, the corresponding packing slips in the preferred language are promptly printed. These additional shipping documents, if required, are then instantly printed on the HPLaserJet 4050 located in the shipping department of the designated warehouse, *even remote warehouses*.

As seen, all of these tasks are executed seamlessly, *like a chain reaction of dominoes*, reducing a once time-consuming and labor-intensive process into a single action.

With Liaison Messenger EDD PLUS, organizations can automate virtually anything they can print, encompassing various Tasks and Actions, all handled by Liaison Messenger EDD, without requiring additional user intervention.

In summary, Liaison Messenger EDD PLUS represents the future of document automation, where the possibilities are limitless, adhering to our timeless mantra: *"If you can print it, you can EDD it..."*



Above is a comprehensive list of actions from the library that you can invoke to build your EDD Scripts.



Liaison Software Corporation
20321 Lake Forest Dr, D7
Lake Forest CA 92630
(800) 811-4618 | (714) 543-9877
sales@liaisonsc.com www.liaisonsc.com